

# Air Shut-off Valve

## Model 4262C

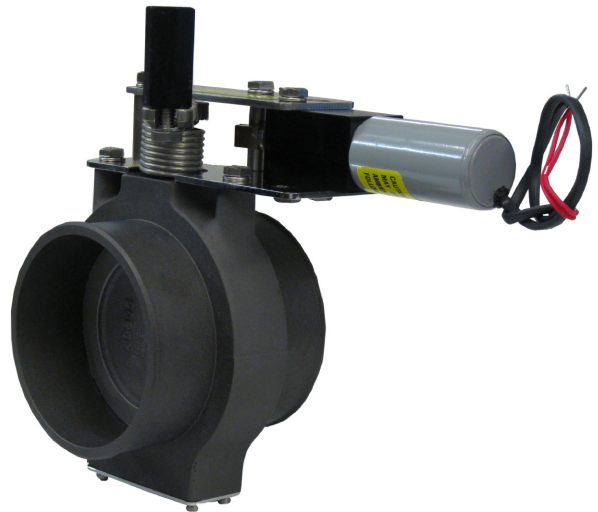
### Overview

The model 4262C air shut-off valve is manually cocked into the open position prior to starting the engine. To stop the engine in an emergency or in the event of engine runaway (overspeed), Model 4262C can be actuated pneumatically, hydraulically or electrically and a manual option is available.

### Typical applications

Runaway/overspeed shutdown of small diesel engines powering the following equipment:

- Aerial platforms
- Air compressors
- Aircraft refuelling
- Cranes
- Diesel mowers
- Diggers
- Fork lift trucks
- Fuel tankers
- Generator sets
- Hydraulic power packs
- Jetting pumps
- Light towers
- Marine engines
- Mining machinery
- Mud pumps
- Seismic testing trucks
- Vacuum trucks
- Vehicles
- Water pumps
- Welding sets
- Wire line units



**Model 4262C  
Air Shut-off Valve**

### Key features and benefits

- Fast acting, solenoid operation
- Compact design for installation use
- Anodized aluminum (Gulfproofed construction)

# Air Shut-off Valve - Model 4262C

## Operation (manual or automatic)

Actuation of the 4262C closes the valve's disc, sealing off intake air to the engine. For automatic operation via sensing engine rpm, use AMOT Model 8210K Speed Switch in conjunction with

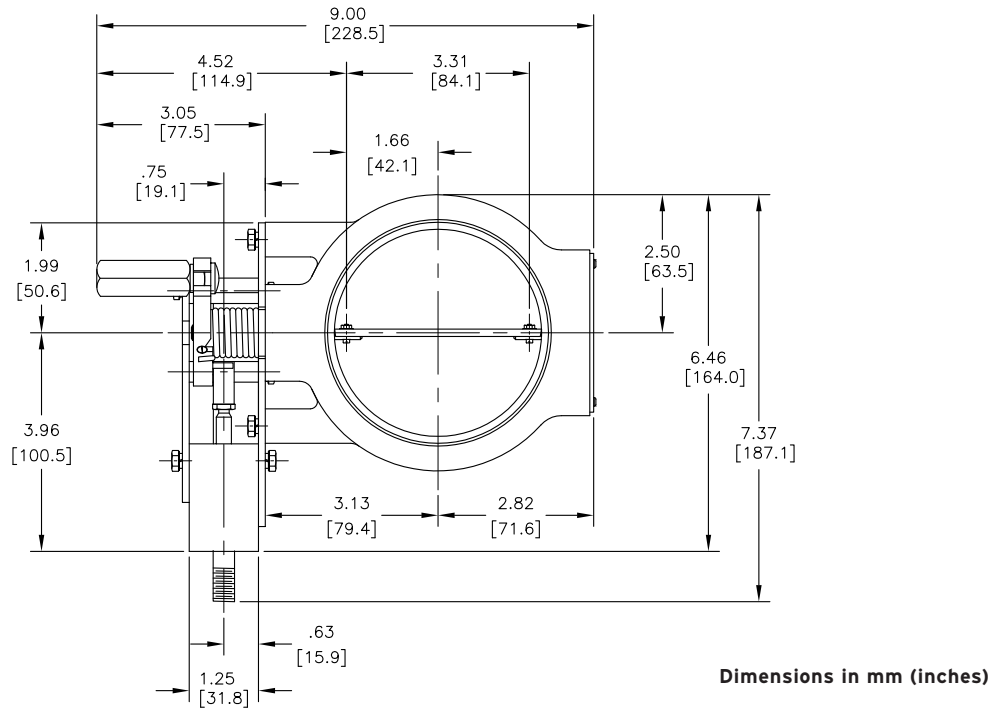
an electrically operated version, or 4110 Speed Valve for a hydraulic/pneumatic system. A manual option is also available.

## Specification

<b>Standard materials</b>	Valve body and disc	Hard anodized cast aluminum	
	Valve shafts	Stainless steel	
	Fasteners, torsion spring	Plated steel, stainless steel	
	Safety control operator	Anodized aluminum	
	Pneumatic cylinders	Aluminum and stainless steel	
	Brackets	Plated steel	
<b>Maximum intake air temperature</b>	Buna N (Nitrile) seals (standard)	121°C	200°F
<b>Valve bore size</b>	4.0" valve size		
<b>Net weight (inc. operator)</b>	1.81 kg	4.0 lbs	
<b>Pneumatic cylinder</b>	Minimum actuation pressure	207 kPa	30 psi
	Maximum working pressure	1380 kPa	200 psi
<b>Manual operator</b>	Mechanical pull to release	67 N	15 lbs
<b>Electric solenoid operators (intermittent duty)</b>	12 VDC type	107 W	
	24 VDC type	107 W	
<b>Safety control operator</b>	Maximum coil temperature	175°C	350°F
	Rated for intermittent duty, 1 minute on, 9 minutes off.		
<b>Safety control operator</b>	Adjustable tripping pressure	34 - 275 kPa	5 - 40 psi falling
	Maximum pressure on diaphragm	1172 kPa	170 psi

# Air Shut-off Valve - Model 4262C

## Dimensions



## How to order

Use the tables below to select the unique specification of your Model 4262C Intake Air Shut-off Valve:

Example	4262C04A0	21	Code Description
<b>Basic Model Code</b>	4262C04A0		Model
			<b>*Contact factory before using in mobile applications</b>
<b>Valve Operator</b>		21	<b>Pneumatic Cylinder</b> , Pressurize to run, spring return to close, NPT threads.
		23	<b>Manual/Pneumatic Cylinder</b> , Manually cocked to run, pressurize or manual trip to shut down, NPT thread.
		25	<b>Pneumatic Cylinder</b> , pressurize to close, spring return to open
		41	<b>Safety Control</b> , NPT thread.
		71*	<b>Electric Solenoid</b> , 12 VDC, manually cocked to run, energize to shut down.
		72*	<b>Electric Solenoid</b> , 24 VDC, manually cocked to run, energize to shut down.

## Accessories

A range of accessories can be purchased along side your 4262 valve:

**Electronic Speed Switch type 8210K** see datasheet 8210K

**Electronic Overspeed Sensing Speed Switch**

**Installation Kit type 8210J** see datasheet 8210KIT2

**Panel/Dash Labels and Momentary Push Buttons**

**Rubber hoses and constant tension hose clamps**

## Americas

---

AMOT USA  
8824 Fallbrook Dr  
Houston, TX 77064  
USA

Tel +1 (281) 940 1800  
Fax +1 (713) 559 9419  
Email general: sales@amotusa.com  
orders: orders@amotusa.com  
customer service: cs@amotusa.com

## Europe, Middle East and Africa

---

AMOT  
Western Way  
Bury St Edmunds  
Suffolk, IP33 3SZ  
England

Tel +44 (0) 1284 762222  
Fax +44 (0) 1284 760256  
Email info@amot.com

AMOT Controls GmbH  
Rondenbarg 25  
22525 Hamburg  
Germany

Tel +49 (0) 40 8537 1298  
Fax +49 (0) 40 8537 1331  
Email germany@amot.com

AMOT Russia  
#34 Shabolovka Street  
Building 2  
Moscow 115419  
Russia

Tel +7 495 617 12 93  
Fax +7 495 913 97 65  
Email russia@amot.com

## Asia and Australasia

---

AMOT Shanghai  
Rm 308, Building No A8  
Jiahua Business Center  
808 Hongqiao Road  
Shanghai 200030  
China

Tel +86 (0) 21 6447 9708  
Fax +86 (0) 21 6447 9718  
Email shanghai@amot.com

AMOT Singapore  
10 Eunus Road 8 #12-06  
Singapore Post Centre  
Singapore 408600

Tel +65 6408 6265  
Fax +65 6293 3307  
Email singapore@amot.com