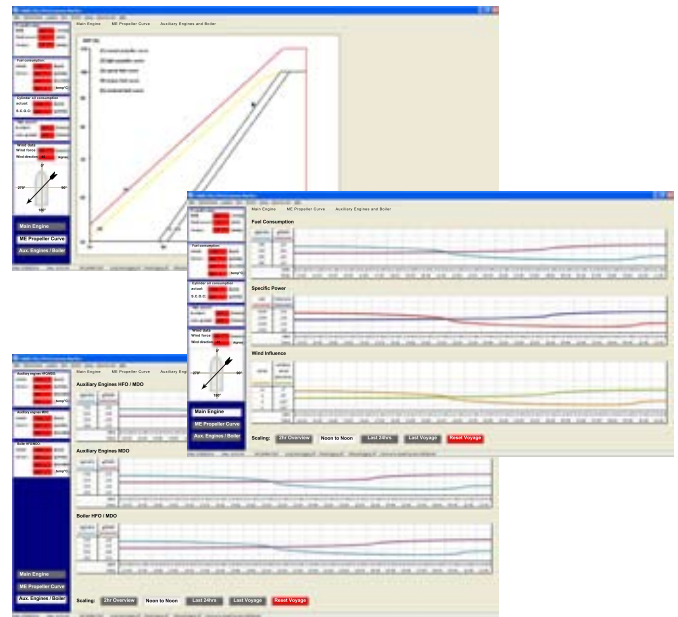


LEMAG SEEAmag

SHIP ENERGY EFFICIENCY ANALYZER

- Measures, records and analyses performance and navigational data
- Permanent display of key performance indicators and trends
- Helps reduce fuel consumption and emissions
- A valuable SEEMP tool



An ideal tool for optimizing ship performance.

With ever increasing pressures on operating costs it is vital to have exact knowledge of all relevant parameters readily available to be able to optimize these accordingly.

The **LEMAG® SEEAmag** measures, records and analyses important data to help the user determine and improve the vessels efficiency by enabling in depth analyses and fleet comparisons.

The system consists of different modules that can be combined to monitor the specific key performance indicators needed for the specific vessel, e.g.:

- Total efficiency (EEOI)
- Engine Efficiency (SFOC)
- Hull efficiency
- Propeller efficiency

All information is displayed in a clear and easy to use format and provides the user with various trend diagrams for set periods of time e.g. noon to noon or last voyage.

The **LEMAG® SEEAmag** can easily be integrated into the vessel's Ship Energy Efficiency Management Plan (SEEMP) to help optimize performance and reduce emissions.

Furthermore the automatic reporting function and remote access possibility enable full transparency of the vessels efficiency to owners and managers without increasing the workload for the crew onboard.



Subject to change without notice