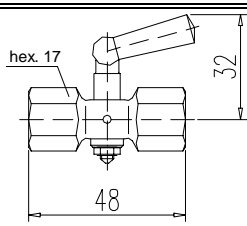
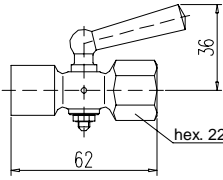
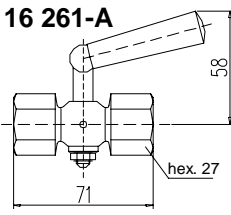
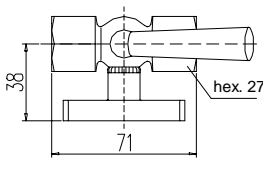
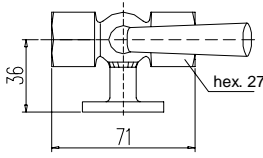
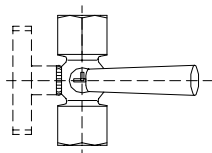
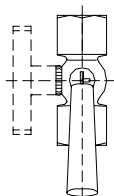


Type	Connection thread	PN	Material	Part no.	Remarks
	G 1/4	6	brass	S003.24.000	
	G 3/8	16	brass	S003.58.000	
DIN 16 261-A 	G 1/2 G 1/2	25 25	brass stainless steel	S003.13.000 S003.13.200	
	G 1/2	25	brass	S003.16.000	with test flange 60 x 25 x 10 mm
	G 1/2	25	brass	S003.46.000	with test flange Ø 40 x 5 mm

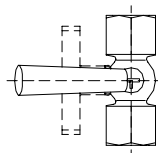
The operating positions are engraved on the plug:



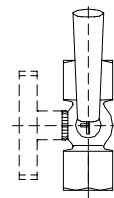
vent



operate



purge



test
(only cock with
test connection)

- Range of application:

For liquids, gas or steam, from - 10°C up to + 50°C

For pressure gauges with sealing washer according to DIN EN 837-1

- Plastic handle