

# Pneumatic-pneumatic positioners

## PPL and PPR series

6.6.01-B

GB-1

PPL and PPR series are robust control devices that provide dependability in difficult environments.

### Characteristics

- Easy maintenance
- Precise calibration with simple SPAN and ZERO adjustments
- Simple conversion to direct acting or reverse acting
- ½ split range available
- Rugged aluminium housing with corrosion-resistant coating
- Vibration resistant design
- Stainless steel gauges standard
- Restricted pilot valve orifice kit for small actuators included



PPL (Linear Type)

### Specifications

	PPL		PPR	
	Linear type (lever feedback)		Rotary type (cam feedback)	
	Single	Double	Single	Double
Input Signal	0.2-1.0 bar (3-15 psi) <sup>1)</sup>			
Supply Air Pressure	Max. 7.0 bar (100 psi)			
Standard Stroke	10-80 mm <sup>2)</sup>		60-100° <sup>3)</sup>	
Pneumatic Connections	Rc ¼ (NPT ¼)			
Ambient Temperature	-20°C ... +70°C			
Pressure Gauge	Stainless Steel			
Output Characteristics	Linear			
Linearity	Within ±1.0% F.S		Within ±1.5% F.S	
Sensitivity	Within ±0.2% F.S		Within ±0.5% F.S	
Hysteresis	Within ±0.5% F.S		Within ±1.0% F.S	
Repeatability	Within ±0.5% F.S			
Air Consumption	5 LPM (Sup. 1.4 bar)			
Flow Capacity	80 LPM (Sup. 1.4 bar)			
Body Material	Aluminium Diecast			
Weight	2.9 kg			



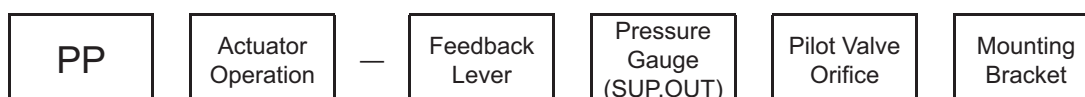
PPR (Rotary Type)

<sup>1)</sup> ½ split range can be adjusted.

<sup>2)</sup> Feedback lever is available for stroke 80-150 mm (PPL).

<sup>3)</sup> Stroke can be adjusted to 0°-60° or 0°-100° (PPR).

### How to order



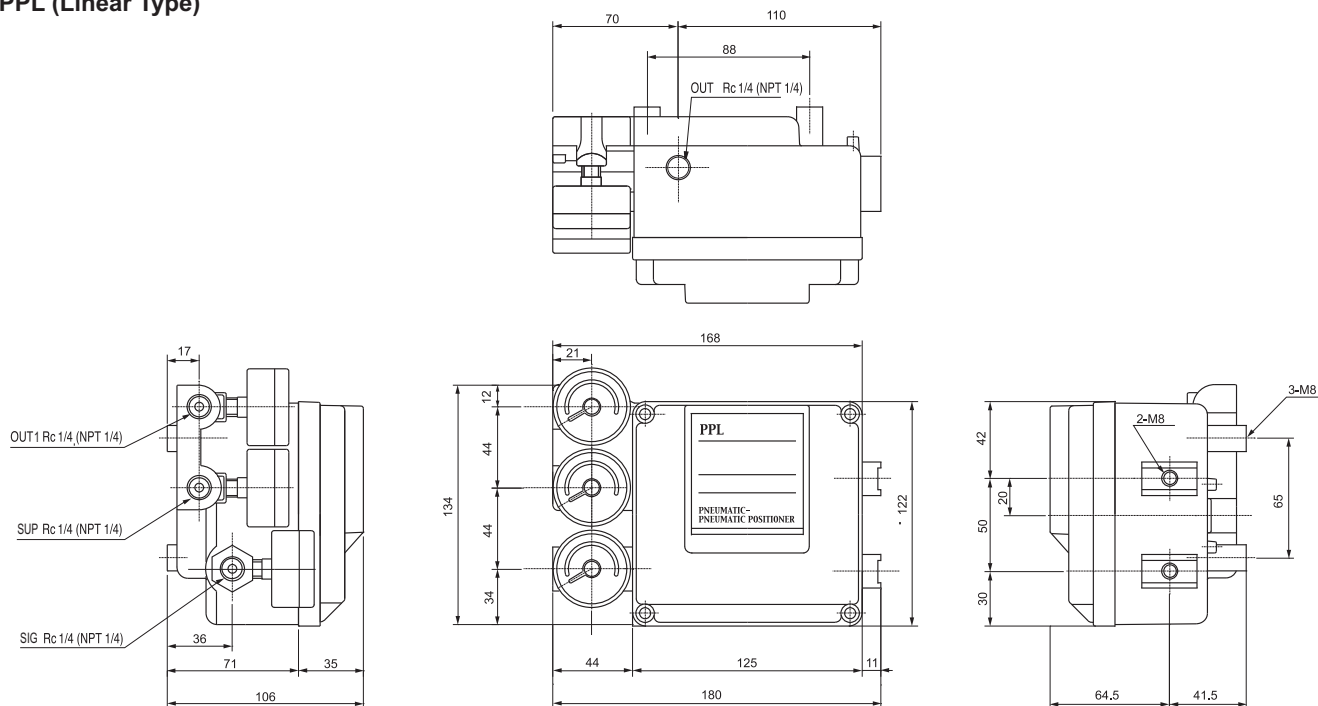
Description	Code
<b>Actuator Operation:</b>	L : Linear type R : Rotary type
<b>Feedback lever:</b>	A : Stroke (10-80 mm) A : Fork lever M6 × 40L B : Fork lever other size on request N : Namur shaft (direct mounting)
<b>Pressure gauge:</b>	0 : 2 bar (30 psi) 1 : 6 bar (90 psi) 2 : 10 bar (150 psi)

Description	Code
<b>Pilot valve Orifice:</b>	S : Standard (actuator volume over 180 cm <sup>3</sup> ) M : Small Orifice (Ø 1.0 or Ø 0.7) (actuator volume 90-180 cm <sup>3</sup> )
<b>Mounting bracket:</b>	N : None L : DIN / IEC534 (for PPL ) R : DIN VDI / VDE3845 (for PPR) F : DHCT bracket 80 × 30

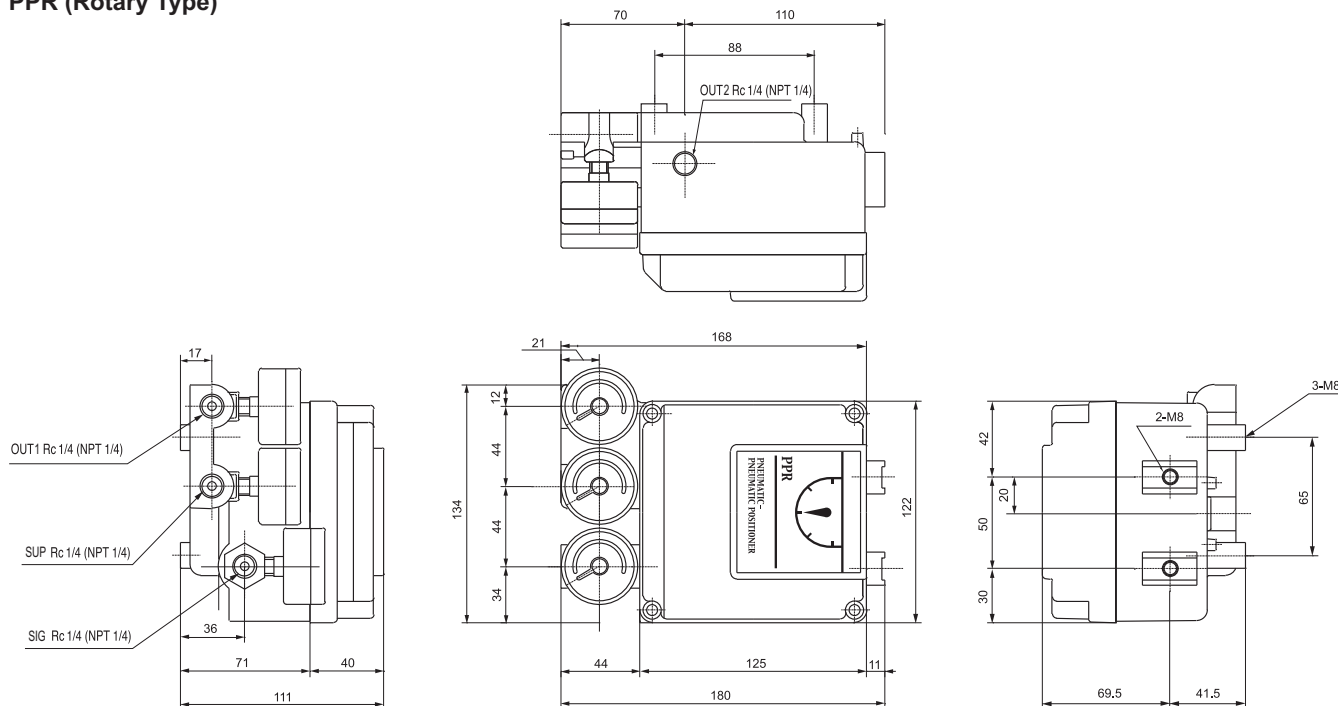
Subject to change without notice.

### Dimensions (mm)

#### PPL (Linear Type)



#### PPR (Rotary Type)



Subject to change without notice.