

Overview

The Roda Deaco RB3A range is a compact butterfly design air intake shutoff valve available with electrical or mechanical actuation. Actuation of the RB3A solenoid rapidly closes the valve's sealing element which shuts off intake air flow into the engine.

The RB3A can be used in fully automatic or manual shutdown systems. When incorporating into an automatic overspeed shutdown system, this valve is compatible with the Revguard 2 Speed Switch.

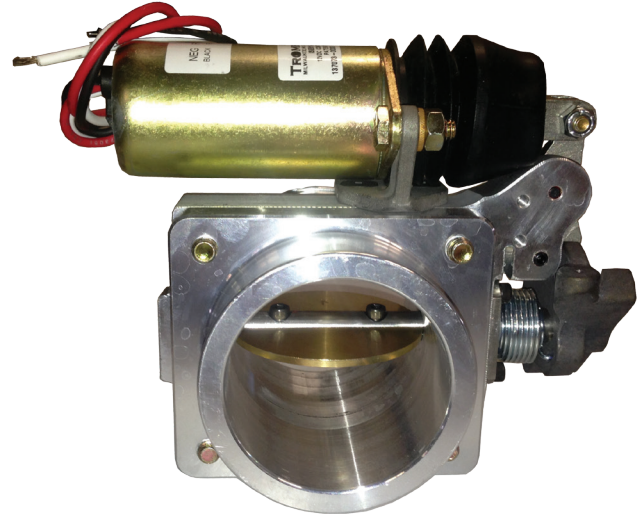
We offer custom configurations to fit your specific applications. Our valves are tested to strict OEM standards for shock, corrosion, vibration and life cycle.

The compact butterfly design is also available in 2" and 4". Additionally, we offer custom configurations to fit your specific applications, with a variety of different types of valves ranging in size from 1" to 14".

Please contact our customer service department to discuss your requirements.

Trusted Industry Experts

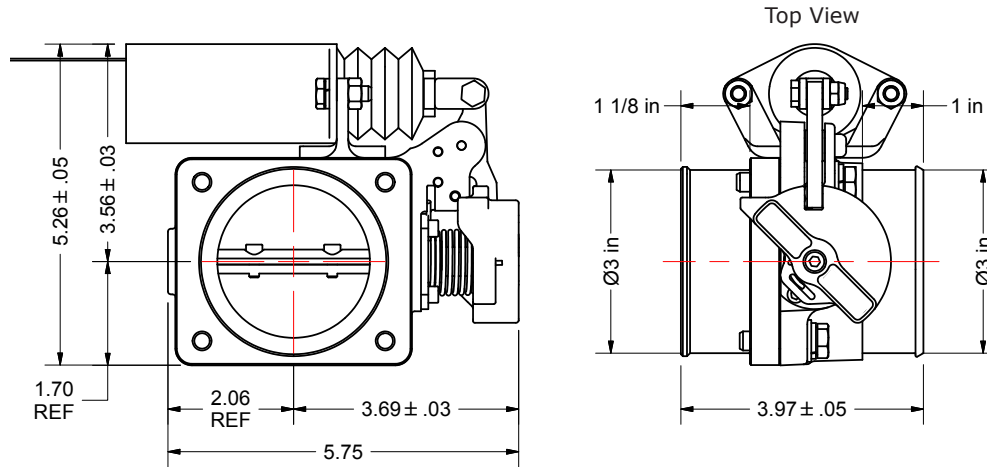
We are the leading provider of air intake shutoff valves and systems with manufacturing facilities in Canada, England and the United States to serve our global markets. Our success is driven by our people and their commitment to exceed customer expectations. We will help you find the right protection system for your diesel engine application.



Features and Benefits

- Compatible for modern low emission diesel engines
- Lightweight, compact design
- Easy to install and maintain
- Can be mounted post-intercooler on turbocharged engines
- Corrosion resistant aluminum construction
- Heavy duty stainless steel linkage
- High strength sealing disc
- Multiple actuation available
- Size range: 2 3/4" to 3 1/2"

Dimensions



Specifications

Standard materials	Valve body	Aluminum
	Sealing element	Brass
	Seals	Nitrile/Silicon
	Solenoid housing	Plated steel
Net weights (including actuator)	Manual actuated	2.5 lbs (1.5 kg)
	Standard solenoid actuated	4.5 lbs (2 kg)
Intake air temp range	Standard valve	-40°F to 257°F (-40°C to 125°C)
Ambient air temp range	Standard valve	-40°F to 257°F (-40°C to 125°C)
Electric solenoid actuation (standard solenoid)	Nominal 12 VDC power requirement	48 amp pull in
	Cycle rate	4 activations per minute
	Nominal 24 VDC power requirement	25 amp pull in
	Cycle rate	6 activations per minute
Manual actuation	Mechanical pull to release	15 lbs (67 Newton)

Americas

AMOT - USA
Tel +1 (281) 940 1800
Fax +1 (713) 559 9419
sales@amot.com

Roda Deaco - Canada
Tel +1 (780) 465 4429
Fax +1 (780) 469 6275
info@rodadeaco.com

Asia Pacific

AMOT - China
Tel +86 21 6279 7700
Fax +86 21 5237 8560
shanghai@amot.com

AMOT - Singapore
Tel +65 6408 6265
Fax +65 6293 3307
singapore@amot.com

Europe, Middle East and Africa

AMOT - England
Tel +44 (0) 1284 762222
Fax +44 (0) 1284 760256
info@amot.com

AMOT - Germany
Tel +49 (0) 40 8537 1298
Fax +49 (0) 40 8537 1331
germany@amot.com