

# Mitcorp INDUSTRIAL VIDEOSCOPE

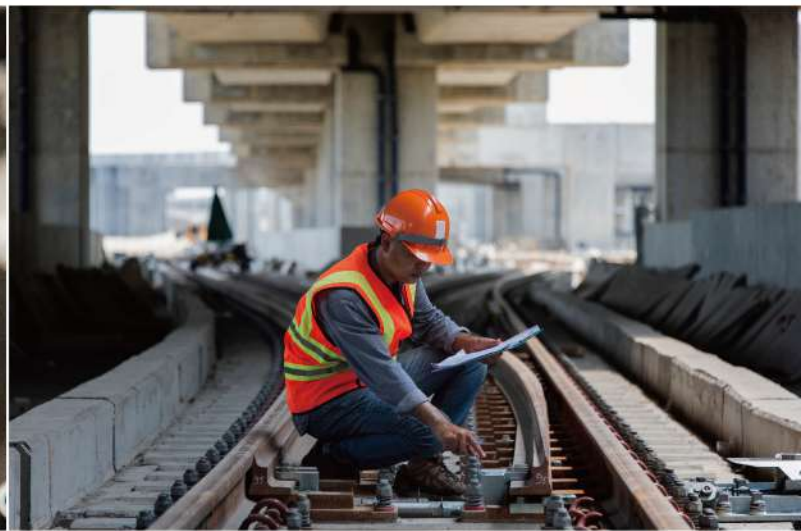
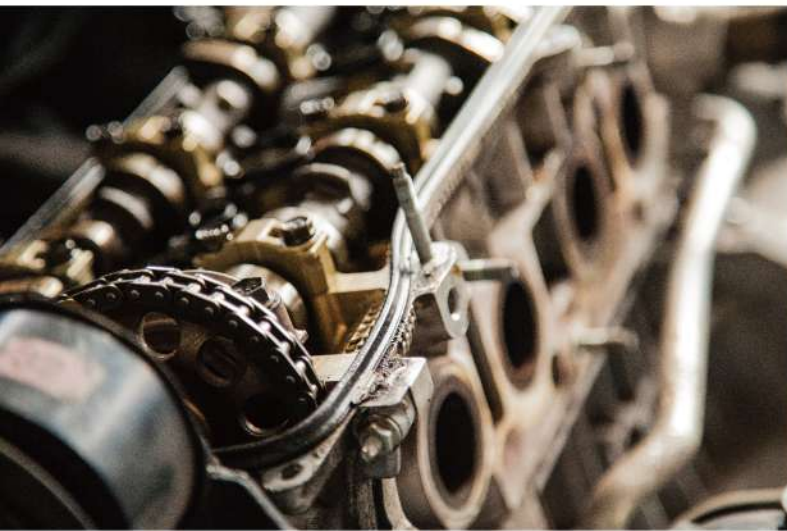
■ CLEARNESS ■ SHARPNESS ■ BRIGHTNESS



**Flexibility Redefined | X750**

# Flexibility and Power on the go

Designed for applications where high mobility is needed, the X750 is lightweight, rugged, and provides high-resolution images and advanced imaging functions that allow workers to fulfill their tasks in even the most challenging environments.



# PRODUCT CHARACTERISTICS



## FLEXIBILITY

- Lightweight
- Ergonomic Shoulder Strap and Roll up Tubes
- Interchangeable Probes and Batteries
- One-Hand Operation

## CONNECTIVITY

- Wi-Fi, HDMI, USB Type C output supported
- Controllable via VideoscopeNow App
- Exclusive GPS mark on photos for utility

## INNOVATION

- Backside Camera with GPS
- Backside LED Flashlight function
- Detachable Screen Module
- Custom Button on Joystick

## PRODUCTIVITY

- SESSION/TAG Image Storage Setting
- Comprehensive Photo Annotation Function
- Report Assist Software
- New launched "Insight" report generation & GPS mapping software. (Optional)

## DURABILITY

- IP 67 Tungsten Braided Insertion Probes
- 100°C Heat Resistant Camera Tip
- IP 54 Console Unit
- 1m Drop Resistant

## TRUE SIGHT

- Super Resolution
- Fine Image Quality
- Advanced Imaging Functions

# Flexibility

Designed for portability and versatility

## Lightweight

The X750 is extremely lightweight, with the whole system weighing only 1.2 kg.

## Ergonomic

The handy design, the shoulder straps, and the roll-up tubes of the X750 allow for one-handed operation.

## Flexible

Interchangeable probes and batteries improve productivity and give you the necessary flexibility for even the most complex applications.



Interchangeable Probes (3.9mm/6.0mm)

One-Hand Operation

Exchangeable Li-Batteries  
(3 hours operation per battery)

# Connectivity

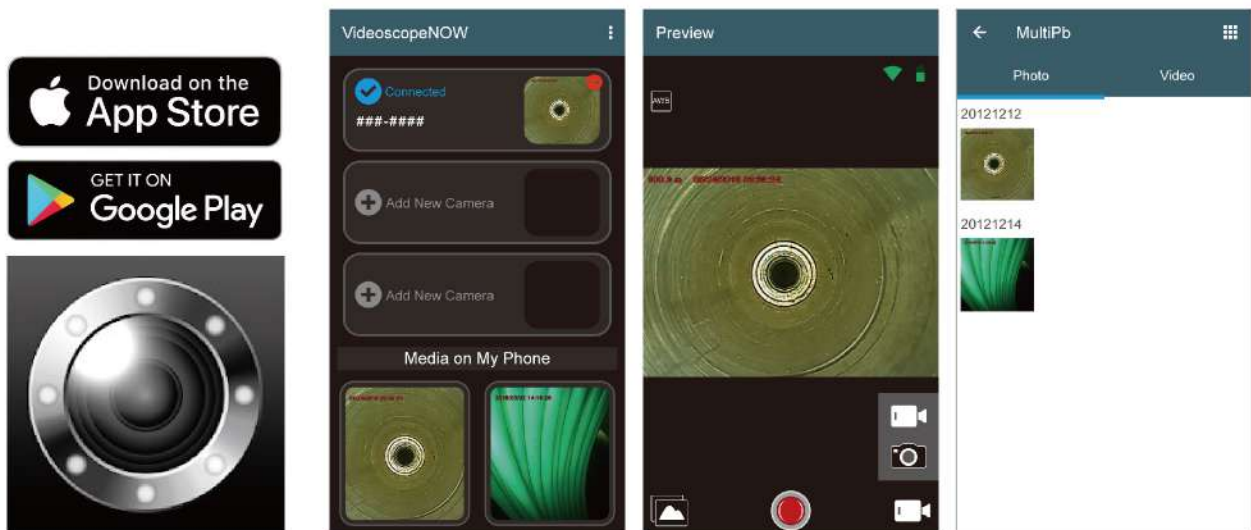
Benefit from multi-connection Solutions



## Comprehensive Solutions

### Controllable Via App

The X750 can link with mobile devices via our VideoscopeNow App. The app lets you control the X750 remotely and download photos and videos onto your device.

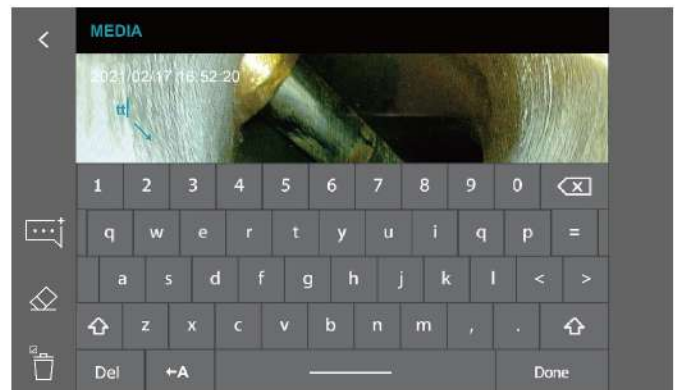
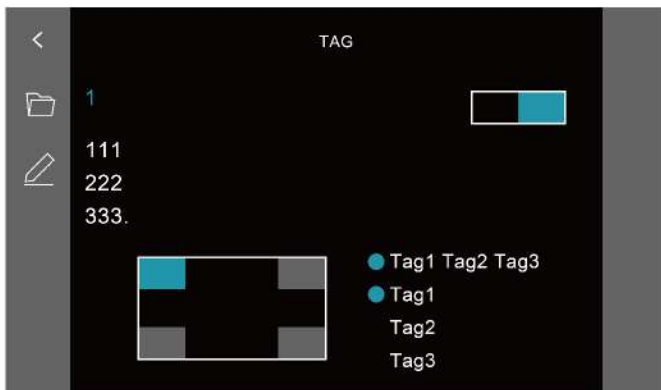
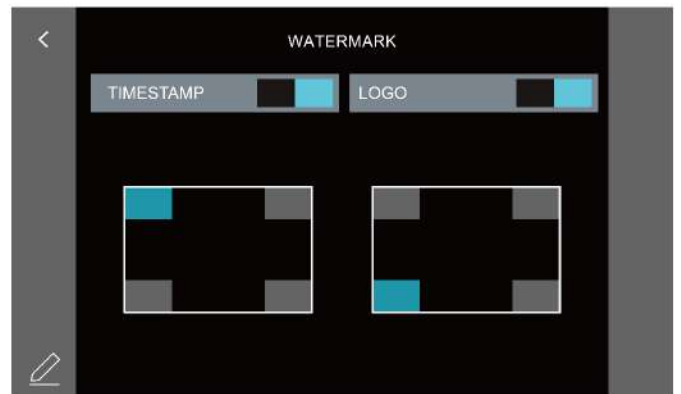
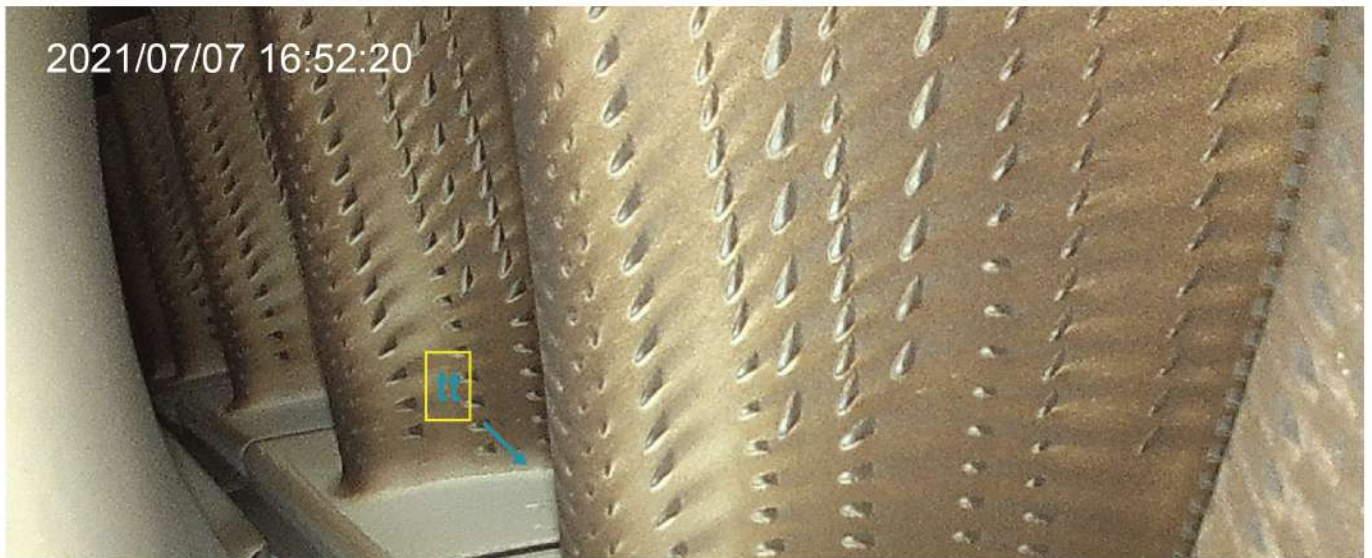


# Productivity

## Advanced File Management

The X750's software includes a file management system that allows you to sort photos and videos into session folders. You can write notes or annotations and add them to your images. A compare function enables you to compare the live view image to gallery images.

You can also include logos and watermarks as well as session tags. These functions make keeping track of all your inspections easy and convenient.



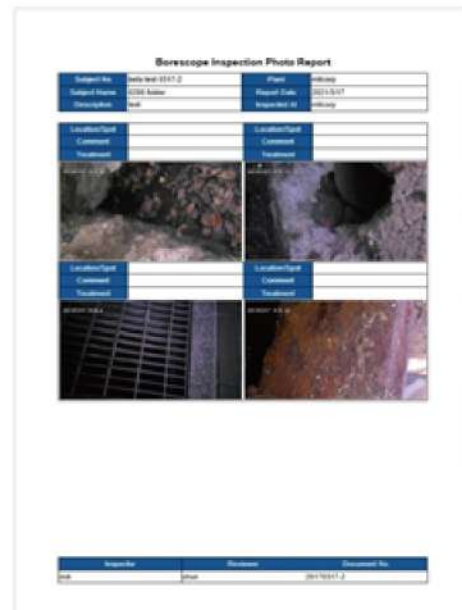
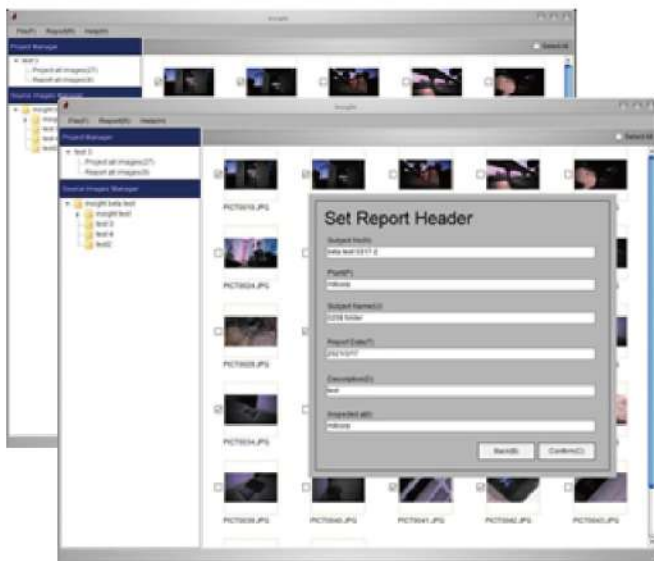


From the Site to the office:  
Improve your inspection workflow

## Report Generation



Generate reports in just 4 steps. Review images and add comments within a well-integrated work process. It significantly improves the workflow and reduces the time needed to sort through large numbers of images.

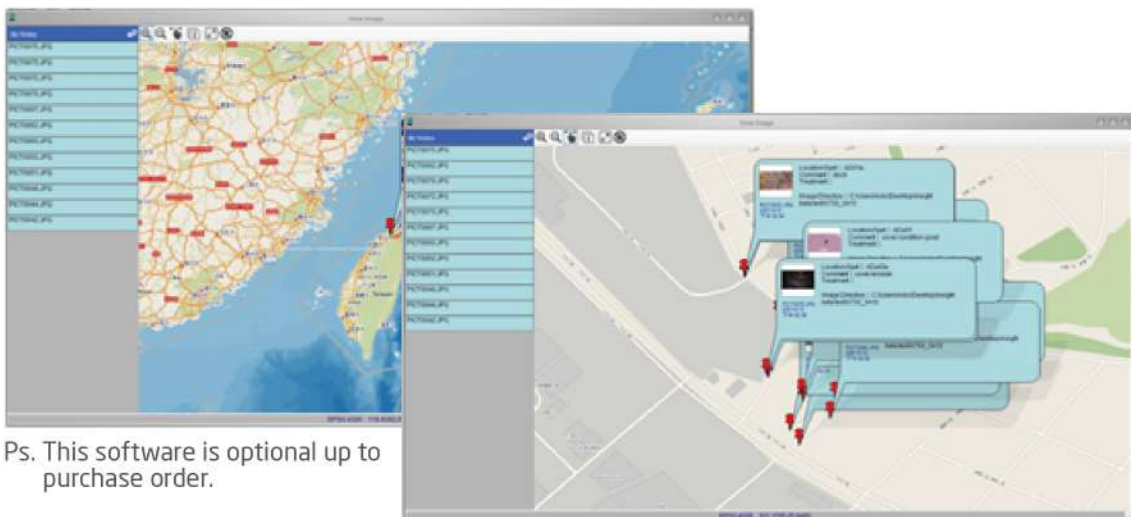


## Location Management



Keep an overview of all inspected objects in large projects.

Images can be GPS tagged and laid out on a map. There, you can easily see different locations, the associated photos, and comments made to these photos.



Ps. This software is optional up to purchase order.

# Innovation

---

## Backside Camera

The X750 possesses a powerful Backside Camera on the backside with 2560\*1440 pixels giving you the ability to take photos from greater distances. The built-in GPS function allows you to tag images and map them out in our Insight software. That creates a better overview in even the most difficult inspections and ensures never getting lost in large areas (for example, offshore wind farms).



## Best Image Viewing Experience

---

### 5" full-touch screen

The X750 features a 5" high-resolution LCD touch-screen that provides an excellent viewing experience.

### Manual Exposure

It also features the same manual exposure known from our X2000, which works similar to that of a smartphone. It allows you to adjust the exposure with only one click on the screen. That makes it not only very helpful but also very convenient to use.





# True Sight

## Super Resolution & Fine Image Quality



6.0 mm probe (Front view) -Still image & Video output resolution: 2560\*1440



3.9 mm probe (Front view / Dual View) -Still image & Video output resolution: 1600\*1600



Enjoy breathtaking video quality and razor-sharp images without compromising probe size and maneuverability.

Our inspection probes combine a flexible design and impeccable image quality that will add value to your next inspection. Diameters of 6mm & 3.9mm, lengths of up to 7m, and impressive resolution enable our probes to be perfectly adapted to your specific needs.



In addition, our insertion probes are easily interchangeable and offer different field of view (FOV) and depth of field (DOF) options, making them a suitable partner for even the most complex applications where contrasting probe requirements must be considered.



# Durability



## Tungsten Rigidity

All X750 insertion probes are tungsten braided and are waterproof up to 1m depth for 30 minutes. The natural abilities of the tungsten metal give our insertion probes increased heat (up to 100°C) - and extensive corrosion resistance. The strength and density of tungsten extend the probe lifespan significantly, protecting them from scratching or abrasion.

## Shorter Distal End & Bending Radius

The bending angle is crucial to ensure maneuverability within the object and to enhance the field of view. Therefore, our insertion probes offer a shortened distal end and a bending angle of up to 140° and are available in 3.9mm and 6.0mm diameters.

## Dual Light Sources & Mirror Adapters

6.0 mm probes come with front & side LEDs that brighten even the darkest spots during an inspection and are compatible with our side-view and dual-view mirror adapters.



IP54 Water/Dust Proof



Enhanced tube strength release



Carrying tube / tip folder

### Enhanced Tube Strength Release

Our insertion probes feature an enhanced tube strength release protecting the tube from overly bending, even when used without the probe stand, and ensures that the articulation works flawlessly.

### Carrying Tube / Tip Holder

The holder underneath the probe stand allows you to neatly tuck the probe tube and the probe tip away so that the X750 can easily be operated in one hand or hang onto the neck strap when, for example, climbing ladders or moving in other hard to pass terrain.

### IP54 Protection

The base unit of the X750 also offers enhanced protection and is IP54 certified, allowing you to work outside even in harsh conditions.

## Trolley Case & Accessories



### 1 Lithium-ion Batteries:

Quickly removable batteries; that provide 3 hours of operation each.

### 2 Probe Adapters:

The X750 comes with a Side View and Dual View Mirror adapter as well as a Pin adapter for measurements. (Only for 6.0 mm probe)

### 3 Accessory Box:

A variety of different power adapters are available to recharge your X750. A mini-HDMI cable, EMI core\*4(detachable for USB or HDMI cable's connector ends), a USB Type-C cable, a memory card, and a cleaning kit are also part of the package.

### 4 Neck Strap:

The X750 comes with a detachable neck strap that can be easily attached or detached.

### 5 Rigid Sleeve:

Rigid sleeves are available for 6.0mm and 3.9 mm probes. Each rigid sleeve comes with an additional extender for the sleeve.

### 6 Trolley Case:

The trolley case is lightweight and dust, and waterproof. It is rugged and ensures that your X750 stays safe during your travels.

# Specifications

Base Unit	
Dimension	L=327.5mm W=152.8mm H=201.3mm
Weight	1230g (w/2 m tungsten tube)
Water Resistance	IP 54 (whole set assembled)
Display	5 inches / detachable touchscreen / 800*480 resolution
Function Buttons	Power ; Reset (pin button)
I/O Port	Micro-SD memory card slot USB Type-C (power in/data out) Mini-HDMI (Av output)
Tip Temperature on screen	60°C / 80°C / 100 °C - 3 Level Warning
Wi-Fi	802.11 b/g/n
App	VideoscopeNow
LED Indicators	Green - working / fully recharged Red - low power / recharging
Microphone	Built - in (on/off switch in settings menu)
Backside Light	LED
Backside Camera	2560*1440 .JPG
GNSS	GPS, GLONASS Dual Mode
Joystick	
Articulation	Full ways mechanical control
Function Buttons	4 Buttons: Brightness + / Brightness - / Snapshot /Record / Custom Self - Definition
Articulation Control	Joystick/ Lock - Stop & Go
Battery (One Piece)	4900mAh replaceable Li - ion Battery
Working Time	3 Hours of Operation (with 2 m/ 3 m; decrease with longer probes)
Working Temperature	Battery powered : -10°C~45°C. Battery charging: 0°C~40°C
Battery /Charger Set	
Dimension	117.5*76.8*69.7 mm
Weight	Full Set (Batteries w/ Charger Set): 393g; Battery 113g; Charger Set: 165g
Charging Time	6 Hours for 2 Batteries / 3 Hours for 1 Battery
LED Indicator	Red: Charging / Green: Fully Charged

### 360° Articulation Probes

Option Items	60D4W-F_TU-M	60D4W-F_TU-F	39D4W-F_TU-M	39D4W-FS_TU-M
Probe head diameter	6.0 mm	6.0 mm	3.9 mm	3.9 mm
Probe head length	19.3 mm	19.3 mm	13 mm	21.6 mm
Direction of View	Front view	Front view	Front view	Front view / 90° Side view
Illumination	Front / Side LEDs	Front / Side LEDs	Front LEDs	Front / Side LEDs
Field of View (FOV)	90°	90°	120°	120°
Depth of Field (DOF)	10 mm~100 mm	25 mm ~ ∞	5 mm ~ 100 mm	5mm~100mm
Still image resolution (.jpg)	2560*1440		1600*1600	
Video resolution (.mov)	2560*1440		1600*1600	
Length	2M/3M : (5M/7M build to order)	2M/3M : (5M/7M build to order)	1.5M / 3M	1.5M
Articulation angle	2M / 3M: Full way >120° : 5M / 7M: Full way >80°		Full way >140°	Full way >120°
Probe head material	Stainless steel			
Probe material	Tungsten braided			
Joystick console dimensions	(W*D*H)139.4*193*84.2 mm (w/o SR and insert tubes)			
Joystick buttons	Brightness +, Brightness -, snapshot / record			
Lock and move	Joystick / Unlock switch on console			
Operating temperature	In air: -10 ~ 100°C, In water: 10 ~ 30°C			
Dust and water proof	Joystick console: IP 54; Insert Tube: under water 1 m for 30 minutes			
Relative humidity	Max 95% non-condensing			
Liquid resistance	Operable when exposed to machine oil, light oil or 5% saline solution			
Storage temperature	10°C ~ 70°C			